

# Wireless Internet Service

## INTRODUCTION

Wireless access at MCPL is high-speed and free. You can access the Internet throughout both Bloomington and Ellettsville public service areas with a laptop or any other wireless device.

### Checklist of What You Need

- A wireless-enabled laptop or other device compatible with Wi-Fi 802-11 wireless standard.
- Built-in networking or an add-on wireless card.
- Dynamic Host Configuration Protocol (DHCP), usually the automatic--or default--protocol for joining a wireless network.
- Computer configured to operate as a client in a wireless network using a station identifier (SSID) of "MCPL\_Wireless".

### Configuring Wireless Network Settings

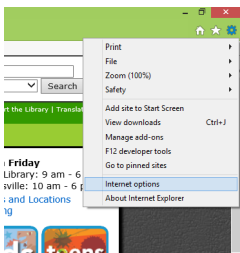
MCPL's network is compliant with WiFi standard (IEEE 802.11g or n). Your wireless software should automatically detect the library's network.

Please note any settings that are already configured in your TCP/IP settings before you change them as you will need the original settings to connect to the Internet when you are away from the library. The library is not able to provide technical assistance to you, and there is no guarantee that you will be able to make a wireless connection. If you need assistance, contact the manufacturer of your laptop or device. The library is not responsible for any changes you make to your computer settings.

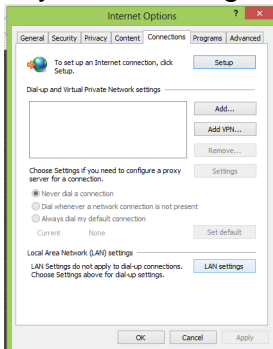
## Windows 7 and 8

There are several settings that could prevent the laptop from connecting but the computer's proxy setting is the most common reason we usually see when a Patron cannot connect.

To check the proxy settings, open Internet Explorer and click on the gear icon in the top right corner. In that menu select Internet Options.

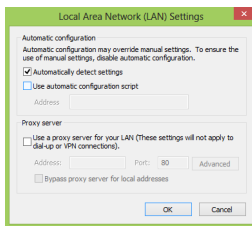


In the Internet Options menu select the Connections tab at the top and click on the button that says LAN settings.



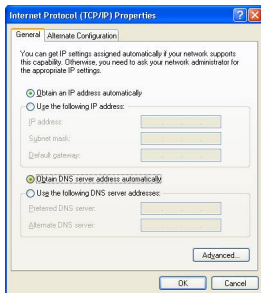
In the LAN Settings menu make sure automatically detect settings is checked and nothing else

like below.



## Windows XP

1. From Control Panel select "Network and Internet Connections."
2. Click "Network and Internet Connections."
3. Click "Network Connections."
4. Right-click "Wireless Network Connection" and open the Properties for the wireless adaptor.
5. Highlight Internet Protocol (TCP/IP) and elect the Properties button.
6. On the General Tab page select "Obtain an IP Address automatically" and "Obtain DNS server address automatically."
7. Click OK on the Internet Protocol Properties window and then click OK on the Wireless Network Connection Properties window.



## Windows 2000

1. Click Start > Settings > Control Panel > Network and Dial-up Connections.
2. Right -click on "Wireless Network Connection" or "Local Area Connection" and select Properties.
3. Highlight Internet Protocol (TCP/IP) and click the Properties button. If more than one TCP/IP protocol is listed look for the one associated with your wireless adaptor.
4. Select "Obtain an IP address automatically" and "Obtain DNS server address automatically."
5. Click OK to close the Properties window and then click OK.

## Mac OS X

1. Navigate to the Network Panel in System Preferences and choose AirPort. If "AirPort is currently off" displays, click Connect and then click "Turn AirPort on" in the "InternetConnect: AirPort dialog box. You may then want to quit InternetConnect to close the AirPort dialog box.
2. Click Configure. A window displays with the following four tabs: AirPort, TCP/IP, AppleTalk, and Proxies.
3. Click the AirPort tab and choose "Automatic" from the drop-down list next to the "by default, join:" field.
4. Click the TCP/IP tab and verify that "Using DHCP" is selected next to "Configure IPv4."
5. Close the Network System Preference and click Apply.

Please read the library's [Internet and Computer Use Policy](#). Wireless use at the library is subject to the same terms and restrictions as use of the library's wired computers.

Security

Wireless networking is insecure. What you send and receive can be intercepted and scrutinized by someone else using a similar device. The Monroe County Public Library assumes no responsibility for the configurations, security, or files on your laptop or other wireless device resulting from connection to the library's network. Information sent to or from your laptop or wireless device can be captured by anyone else with a wireless device and appropriate software. MCPL's wireless network does not use security encoding. This encoding has been demonstrated to be insecure, and it adds complexity to setting up wireless clients.

**Some Basic Precautions:**

- Use secure websites for transactions.
- Install anti-virus software.
- Log out of a wireless network.

Reliability

Wireless is not as reliable as wired networks. Wireless networks are subject to interference resulting in loss of transmission

Caution!

Users of Monroe County Public Library's wireless networking service should be aware that it is possible for other devices to intercept their Internet communications.

Updated December 29, 2014